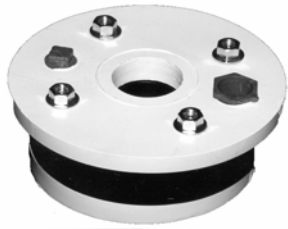




Our tradition runs deep.

W.D.B. "XTRA" Sanitary Well Seals

W.D.B. "Xtra" sanitary well seals are molded from HI IMPACT ABS for "EXTRA" strength and endurance. The packer is "EXTRA" thick and its exclusive design enables the sanitary sealing of an extra wide range of casing sizes. This reduces inventory as well as warehousing and shipping costs.

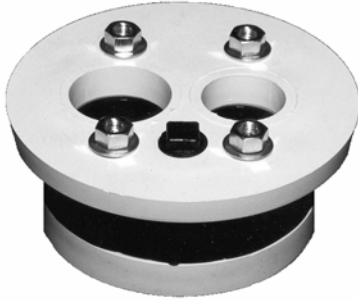


THESE SANITARY WELL SEALS HAVE A PROVEN TRACK RECORD OF OVER 3 DECADES IN BOTH WARM AND COLD CLIMATES.

Part No.	Size	Fits Casing ID	Drop Pipe IPS	Vent Tap IPS	Conduit Tap IPS	WT	CTN Qty	List Price
200S	2"	2"	1/2"	---	---	4 oz.	---	10.34
201S	2"	1"	1"	---	---	4 oz.	24	10.34
301S	3"	1"	1"	1/4"	3/8"	1 lb.	10	18.24
400B	4"	4-4 1/4"	Blank	1/2"	3/4"	1 1/2 lb.	10	15.44
401S	4"	4-4 1/4"	1"	1/2"	3/4"	1 1/2 lb.	10	15.44
402S	4"	4-4 1/4"	1 1/4"	1/2"	3/4"	1 1/2 lb.	10	15.44
403S	4"	4-4 1/4"	1 1/2"	1/2"	3/4"	1 1/2 lb.	10	15.44
404S	4"	4-4 1/4"	2"	1/2"	3/4"	1 1/2 lb.	10	15.44
450S	4 1/2"	4 3/8-4 7/8"	Blank	1/2"	3/4"	1 3/4 lb.	10	17.38
451S	4 1/2"	4 3/8-4 7/8"	1"	1/2"	3/4"	1 3/4 lb.	10	17.38
452S	4 1/2"	4 3/8-4 7/8"	1 1/4"	1/2"	3/4"	1 3/4 lb.	10	17.38
453S	4 1/2"	4 3/8-4 7/8"	1 1/2"	1/2"	3/4"	1 3/4 lb.	10	17.38
500B	5"	4 7/8-5 1/4"	Blank	1/2"	3/4"	2 lb.	10	19.23
501S	5"	4 7/8-5 1/4"	1"	1/2"	3/4"	2 lb.	10	19.23
502S	5"	4 7/8-5 1/4"	1 1/4"	1/2"	3/4"	2 lb.	10	19.23
503S	5"	4 7/8-5 1/4"	1 1/2"	1/2"	3/4"	2 lb.	10	19.23
504S	5"	4 7/8-5 1/4"	2"	1/2"	3/4"	2 lb.	10	19.23
550B	5 1/2"	5 3/8-5 7/8"	Blank	1/2"	3/4"	2 1/4 lb	10	21.23
551S	5 1/2"	5 3/8-5 7/8"	1"	1/2"	3/4"	2 1/4 lb	10	21.23
552S	5 1/2"	5 3/8-5 7/8"	1 1/4"	1/2"	3/4"	2 1/4 lb	10	21.23
553S	5 1/2"	5 3/8-5 7/8"	1 1/2"	1/2"	3/4"	2 1/4 lb	10	21.23
554S	5 1/2"	5 3/8-5 7/8"	2"	1/2"	3/4"	2 1/4 lb	10	21.23
600B	6"	5 7/8-6 1/4"	Blank	1/2"	3/4"	3 lb.	10	23.16
601S	6"	5 7/8-6 1/4"	1"	1/2"	3/4"	3 lb.	10	23.16
602S	6"	5 7/8-6 1/4"	1 1/4"	1/2"	3/4"	3 lb.	10	23.16
603S	6"	5 7/8-6 1/4"	1 1/2"	1/2"	3/4"	3 lb.	10	23.16
604S	6"	5 7/8-6 1/4"	2"	1/2"	3/4"	3 lb.	10	23.16
620B	6 1/4"	6 1/4-6 1/2"	Blank	1/2"	3/4"	3 1/4 lb.	10	24.11
621S	6 1/4"	6 1/4-6 1/2"	1"	1/2"	3/4"	3 1/4 lb.	10	24.11
622S	6 1/4"	6 1/4-6 1/2"	1 1/4"	1/2"	3/4"	3 1/4 lb.	10	24.11
623S	6 1/4"	6 1/4-6 1/2"	1 1/2"	1/2"	3/4"	3 1/4 lb.	10	24.11
624S	6 1/4"	6 1/4-6 1/2"	2"	1/2"	3/4"	3 1/4 lb.	10	24.11
650B	6 1/2"	6 3/8-6 7/8"	Blank	1/2"	3/4"	3 1/2 lb.	10	25.09
651S	6 1/2"	6 3/8-6 7/8"	1"	1/2"	3/4"	3 1/2 lb.	10	25.09
652S	6 1/2"	6 3/8-6 7/8"	1 1/4"	1/2"	3/4"	3 1/2 lb.	10	25.09
653S	6 1/2"	6 3/8-6 7/8"	1 1/2"	1/2"	3/4"	3 1/2 lb.	10	25.09
654S	6 1/2"	6 3/8-6 7/8"	2"	1/2"	3/4"	3 1/2 lb.	10	25.09
800B	8"	8-8 1/4"	Blank	1/2"	1"	5 lb.	6	30.90
801S	8"	8-8 1/4"	1"	1/2"	1"	5 lb.	6	30.90
802S	8"	8-8 1/4"	1 1/4"	1/2"	1"	5 lb.	6	30.90
803S	8"	8-8 1/4"	1 1/2"	1/2"	1"	5 lb.	6	30.90
804S	8"	8-8 1/4"	2"	1/2"	1"	5 lb.	6	30.90
805S	8"	8-8 1/4"	2 1/2"	1/2"	1"	5 lb.	6	30.90
806S	8"	8-8 1/4"	3"	1/2"	1"	5 lb.	6	30.90
1200S	12"	12"	---	1/2"	1"	12 lb.	1	P/A
1600S	16"	16"	---	1/2"	1"	20 lb.	1	P/A

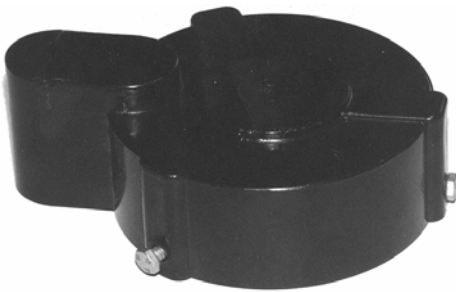
Special and modified well seals are available and are priced on application

Double Hole (Jet) Well Seals



Part No.	Size	Fits Casing ID	Drop Pipe IPS	Vent Tap IPS	WT	CTN Qty	List Price
400D	4"	4-4 1/4"	1x1 1/4"	1/2"	1 1/2 lb.	10	15.45
450D	4 1/2"	4 3/8-4 7/8"	1x1 1/4"	1/2"	1 3/4 lb.	10	17.38
451D	4 1/2"	4 3/8-4 7/8"	1 1/4x1 1/4"	1/2"	1 3/4 lb.	10	17.38
452D	4 1/2"	4 3/8-4 7/8"	1 1/4x1 1/2"	1/2"	1 3/4 lb.	10	17.38
500D	5"	4 7/8-5 1/4"	1x1 1/4"	1/2"	2 lb.	10	19.23
501D	5"	4 7/8-5 1/4"	1 1/4x1 1/4"	1/2"	2 lb.	10	19.23
502D	5"	4 7/8-5 1/4"	1 1/4x1 1/2"	1/2"	2 lb.	10	19.23
550D	5 1/2"	5 3/8-5 7/8"	1x1 1/4"	1/2"	2 1/2 lb.	1021.23	
551D	5 1/2"	5 3/8-5 7/8"	1 1/4x1 1/4"	1/2"	2 1/2 lb.	1021.23	
552D	5 1/2"	5 3/8-5 7/8"	1 1/4x1 1/2"	1/2"	2 1/2 lb.	1021.23	
600D	6"	5 7/8-6 1/4"	1x1 1/4"	1/2"	3 lb.	10	21.05
601D	6"	5 7/8-6 1/4"	1 1/4x1 1/4"	1/2"	3 lb.	10	21.05
602D	6"	5 7/8-6 1/4"	1 1/4x1 1/2"	1/2"	3 lb.	10	21.05
620D	6 1/4"	6 1/4-6 3/8"	1x1 1/4"	1/2"	3 1/4 lb.	10	21.92
621D	6 1/4"	6 1/4-6 3/8"	1 1/4x1 1/4"	1/2"	3 1/4 lb.	10	21.92
622D	6 1/4"	6 1/4-6 3/8"	1 1/4x1 1/2"	1/2"	3 1/4 lb.	10	21.92
650D	6 1/2"	6 3/8-6 7/8"	1x1 1/4"	1/2"	3 1/2 lb.	10	22.81
651D	6 1/2"	6 3/8-6 7/8"	1 1/4x1 1/4"	1/2"	3 1/2 lb.	10	22.81
652D	6 1/2"	6 3/8-6 7/8"	1 1/4x1 1/2"	1/2"	3 1/2 lb.	10	22.81
800D	8"	8-8 1/4"	1x1 1/4"	1/2"	5 lb.	6	28.09
801D	8"	8-8 1/4"	1 1/4x1 1/4"	1/2"	5 lb.	6	28.09
802D	8"	8-8 1/4"	1 1/4x1 1/2"	1/2"	5 lb.	6	28.09
803D	8"	8-8 1/4"	1 1/2x2"	1/2"	5 lb.	6	28.09

Thermoplastic Well Caps (Conduit Type)



Part No.	Maximum Fit	WT	CTN Qty	List Price
WWC4	4 3/4"	10 oz.	25	13.37
WWC5	5 3/4"	12 oz.	25	13.37
WWC6	6 5/8"	16 oz.	25	13.37

The design of W.D.B. Conduit Well Caps, coupled with use of engineering grade plastic resin, makes this product outstanding in extreme weather conditions. Even sub-zero temperatures. Caps are secured to the casing with a 1/4" hex plated cap screws. Internal threads are plated "T" nuts.

Water-Tight Vermin Proof Caps



Part No.	Fits Casing Size	Conduit Tap	WT	CTN Qty	List Price
WTC4	4" IPS	1 1/4" IPS	2 lb.	6	22.05
WTC6	6" IPS	1 1/4" IPS	4 lb.	6	35.64
WTC8	8" IPS	1 1/4" IPS	8 lb.	1	55.95

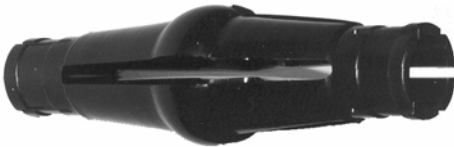
WTC caps are molded using hi-impact thermoplastic resin. The resin is specially formulated for outdoor weatherability. Stainless steel bolts, washers and nuts are standard. The double check valve lets the system breathe and still maintain it's water-tight integrity.

Well Casing End Caps



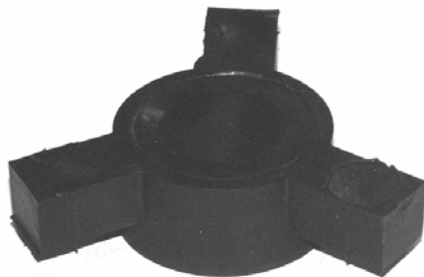
Part No.	Fits Casing Size	CTN Qty	List Price
WCEC 4	4"	20	6.08
WCEC 4 1/2	4 1/2"	20	7.80
WCEC 5	5"	20	7.80
WCEC 6	6"	10	15.72
WCEC 6 1/4	6 1/4"	10	18.92
WCEC 8	8"	10	25.78

Torque Arrestors



Part No.	Fits Drop Pipe IPS	Fits Casing ID	WT	CTN Qty	List Price
WTA 481S	1" or 1 1/4"	4" to 8"	2 lb.	1	7.99
WTA 481BC	1" or 1 1/4"	4" to 8"	24 lb.	12 w/ clamps	7.38
WTA 481B	1" or 1 1/4"	4" to 8"	23 lb.	12 w/o clamps	6.17

Spider Arrestors

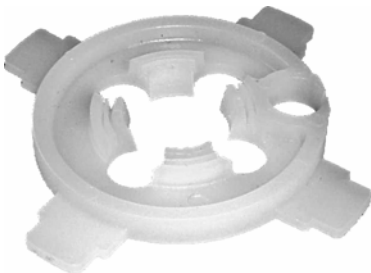


Part No.	Fits Drop Pipe IPS	Fits Casing ID	WT	CTN Qty	List Price
WSA 6100B	1"	4" to 6"	25 lb.	25 w/o clamps	4.71
WSA 6125B	1 1/4"	4" to 6"	25 lb.	25 w/o clamps	4.71
WSA 6150B	1 1/2"	4" to 6"	25 lb.	25 w/o clamps	4.71
WSA 6200B	2"	4" to 6"	25 lb.	25 w/o clamps	4.71
WSA 6250B	2 1/2"	4" to 6"	25 lb.	25 w/o clamps	4.71
WSA 6300B	3"	4" to 6"	25 lb.	25 w/o clamps	4.71

For Clamps add \$1.00

W.D.B. Spider Arrestors are molded using thermoplastic resin. They may be cut to casing size using handy markings and easily secured to drop pipe with stainless steel clamps.

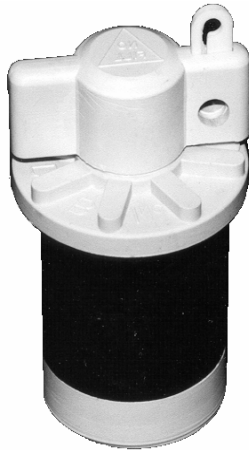
Cable Guard



Part No.	WT	CTN Qty	List Price
WCG 60	2 oz.	100	0.69

MONITOR WELL PRODUCTS

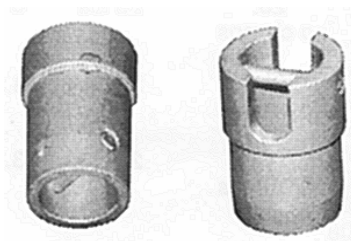
Monitor Well Caps (Tamper Proof)



Part No.	List Price
WMWC 2"	16.68
WMWC 4"	23.88
WMWC 6"	32.28
WMWC 8"	64.68

W.D.B. Monitor Well Caps are made to exacting tolerances using completely inert, alloyed thermoplastic resin. They are long life and an economical solution for many applications.

Monitor Well Baler Kit



Part No.	List Price
WMKBK 125k (Fits PVC 1 1/4" IPS, Schedule 40)	7.20

No cement needed. Just drive into the pipe.

Wedge Points



Part No.	List Price
WPWP 1 1/2 (Fits 160 1 1/2" PVC pipe)	2.53
WPWP 2 (Fits Schedule 40 2" PVC pipe)	2.69

W.D.B. Wedge Points are made of PVC. They are designed to be driven into PVC pipe without using cement. However, in those applications requiring a solvent welded joint, use a quality PVC cement and standard practices.

Couplings



Part No.	Size IPS	20	Qty 21-49	50+	List Price
WDPC 100	1"	1.49	1.37	22.05	2.28
WDPC 125	1 1/4"	1.96	1.80	1.66	3.00
WDPC 150	1 1/2"	3.59	3.31	3.04	5.52
WDPC 200	2"	5.15	4.75	4.36	8.71